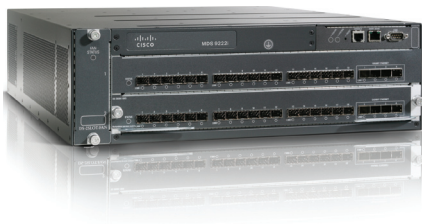


EMC Connectrix MDS-9222i Multi-Protocol Switch



With a base of eighteen 4 Gb Fibre Channel ports and four Gigabit Ethernet ports, the EMC® Connectrix® MDS-9222i integrates Fibre Channel and IP Storage Services in a single system. The unit has a modular expansion slot that accommodates MDS-switching blades including an 8 Gb/s Fibre Channel blade. The MDS-9222i offers intelligent network services such as Virtual SANs (VSANs), Access Control Lists (ACLs), Fibre Channel Congestion Control (FCC), and fabric-wide Quality of Service (QoS).

System Architecture

Fibre Channel Standards

FC-PH, FC-PH-2, FC-PH-3, FC-GS-2, FC-GS-3, FC-FLA, FC-FG, FC-SW-2, FC-AL, FC-AL-2, FC-PLDA, FC-VI, FC-FS, FC-P1

IP Protocols

FCIP—for SRDF®, MirrorView™, and SAN Copy™

iSCSI—for host connectivity with an Ethernet connection

Fibre Channel Ports

Base 18 Fibre Channel ports with 4 IP ports up to 70 ports (IP ports are Fibre Gigabit Ethernet.)

Cascade Maximum

Up to 24 director/switches, 3 hops, depending on configuration

Virtual SANs (VSANs)

Up to 20 VSANs

Performance

Full line-speed switching, 4 Gb, full duplex for the base unit

48-port host-optimized blade supports eight 8 Gb/s ports

Switch Core

Non-blocking

Maximum Frame Size

2112

Classes of Service

Class 2, Class 3, Class F

Fibre Channel Port Types

E_Port, F_Port, and TE_Ports

Media Types

Hot-pluggable, industry-standard LC Small Form Factor Pluggable (SFP). Short wave laser, up to 1,640 ft/500 meter. Long wave laser up to 6.21 miles/10 km. 300 meters for 2Gb/sec. 100 km CWDM also supported.

Fabric Services

Simple Name Server, Registered State Change Notification (RSCN), Login Services, Broadcast, Name Server Zoning

Hot-swappable Components

Power supply, fan assembly, SFPs, switching modules

Installation Options

19-inch EIA-compliant rack or EMC EC-1500 cabinet

Optional Features

Enterprise Packages

Fabric Manager Server

SAN Extension over IP

Storage Media Encryption

Availability Features

Redundant AC Input

Redundant, hot-swappable power supplies

Non-disruptive subsystem maintenance

Stateful process restart

Connectivity

Supported Fibre Channel Operating Systems

AIX, HP/UX, Microsoft Windows, and Linux

For complete details, refer to EMC Support Matrix on www.EMC.com.

Management

Interface

- Cisco Fabric Manager—Java-based graphical user interface (GUI) provides interactive configuration and trouble-shooting
- SNMP support
- Scriptable CLI

Access

Ethernet (RJ-45), RS-232 Console CLI (RJ-45 and DB-9)

Physical Specifications

MDS-9222i

Dimensions	Height (in/cm)	Width (in/cm)	Depth (in/cm)	Maximum Weight (lb/kg)
	5.25/13.34	17.32/43.99	22.66/57.56	53.5/24.3

Power Specifications

	North America	International
Input Voltage (VAC)	100–240 (±10% for full range)	Country Specific
Frequency (Hz)	nominal (±3 Hz for full range)	Country Specific
Circuit Breaker (Amps.)	Max 16A	Country Specific

Environmental Specifications

Operating Temperature (°F/°C)	32/0 to 104/40
Non-operating temperature (°F/°C)	40/–40 to 158/70
Operating altitude (ft/m)	Sea level to 6500/2000
Humidity (%), non-condensing operating	10–90

Regulatory Compliance

Safety

- UL 60950-1
- CAN/CSA-C22.2 No. 60950-1
- EN 60950-1
- IEC 60950-1
- AS/NZS 60950
- IEC 60825
- EN 60825
- 21 CFR 1040

EMC

- FCC Part 15 (CFR 47) Class A
- ICES-003 Class A
- EN55022 Class A
- CISPR22 Class A
- AS/NZS CISPR22 Class A
- VCCI Class B
- EN55024
- ETS300 386
- EN50082-1
- EN61000-3-2
- EN61000-3-3
- EN61000-6-1
- CISPR24

NEBS

- GR-63-Core NEBS Level 3
 - GR-1089-Core NEBS Level 3
 - ETSI
 - ETS 300 019 Storage Class 1.1
 - ETS 300 019 Transportation Class 2.3
 - ETSI 300 019 Stationary Use Class 3.1
-

Regulatory Specifications

Product Ecology

- Restriction of Hazardous Substances in Electrical and Electronic Equipment (ROHS) Directive 2002/95/EC
- Waste Electrical and Electronic Equipment (WEEE) Directive (2002/96/EC)

The Connectrix MDS-9222i switch shall be UL Listed and CSA Certified (or C-UL Listed) to UL 60950/CSA 22.2 No. 60950 3rd Edition, TUV approved to EN 60950 3rd Edition, and have a CB Report to IEC 60950 3rd Edition.

EMC²
where information lives®

EMC Corporation
Hopkinton
Massachusetts
01748-9103
1-508-435-1000
In North America 1-866-464-7381
www.EMC.com