

EMC Ionix Network Configuration Manager

Part of the Ionix Data Center Automation and Compliance Family

The Big Picture

- Delivers a complete network compliance, change, and configuration management lifecycle solution—auto-discover, baseline, design, validate, update, secure, audit, report, and manage
- Integrates with EMC Smarts and other fault-management systems to significantly reduce the time needed to identify IT problems and restore IT services
- Discovers and models network relationships
- Links network compliance with remediation
- Creates rich audit and compliance reports
- Automates manual and repetitive tasks
- Enforces best practices for changes across the entire network
- Supports ITIL- and CMDB/CMS-related processes and initiatives
- Eliminates security breaches by preventing unauthorized device access

Model-based and automated compliance, change, and configuration management for networks

EMC® Ionix™ Network Configuration Manager (formerly EMC VoyenceControl™)—a model-based, automated compliance, change, and configuration management solution—delivers industry-recognized best practices, enhances collaborative network infrastructure design, verifies controlled change processes, provides network device and service configuration transparency, and ensures compliance with corporate and regulatory requirements. These capabilities enable you to ensure the security, availability, and operational efficiency of your network.

Managing to the network infrastructure lifecycle

Network Configuration Manager automates support for all facets of the network infrastructure lifecycle by seamlessly integrating critical design, change, and compliance management requirements.

Design

- Design new virtual networks based on existing designs with Network Configuration Manager's exclusive Virtual Design Workspace
- Collaborate securely in real time thanks to complete role-based security
- Employ intelligent automation to create large-scale designs—error-free, in a fraction of the time
- Audit designs—before deployment—for compliance with corporate policy and government regulatory standards

Change

- Realize significant improvements in the availability and consistency of services
- Use “Golden Configs” to create templates for new device deployments
- Virtually eliminate standard change errors
- Address standard and non-standard changes
- Complete routine and complex tasks with ITIL-compliant change processes and workflow approvals
- Adapt the configuration tool to your processes with integrations to popular workflow, trouble ticketing, and help desk solutions

Compliance

- Design, enforce, and report on adherence to complex policies
- Enforce policies over the entire domain—or just one network, site, or subnet
- Demonstrate on-demand compliance and its change/control process
- Report on historical compliance of the managed infrastructures using the configurations and policies in place on the date selected

Compliance

- Avoid costly penalties and the overhead of audits by quickly demonstrating that your network is in compliance—with a single click
- Take advantage of customized solutions for the Payment Card Industry Data Security Standard (PCI), Sarbanes-Oxley (SOX), Gramm-Leach-Bliley (GLB), the Statement on Auditing Standards (SAS 70), and the Health Insurance Portability and Accountability Act (HIPAA)
- Write compliance rules that work across multiple hardware vendors' devices

Network Configuration Manager's open, scalable, model-based, and multitiered architecture

Network Configuration Manager's multitiered management architecture provides extreme scalability and flexibility, allowing you to configure your networks based on your criteria (see Figure 2).

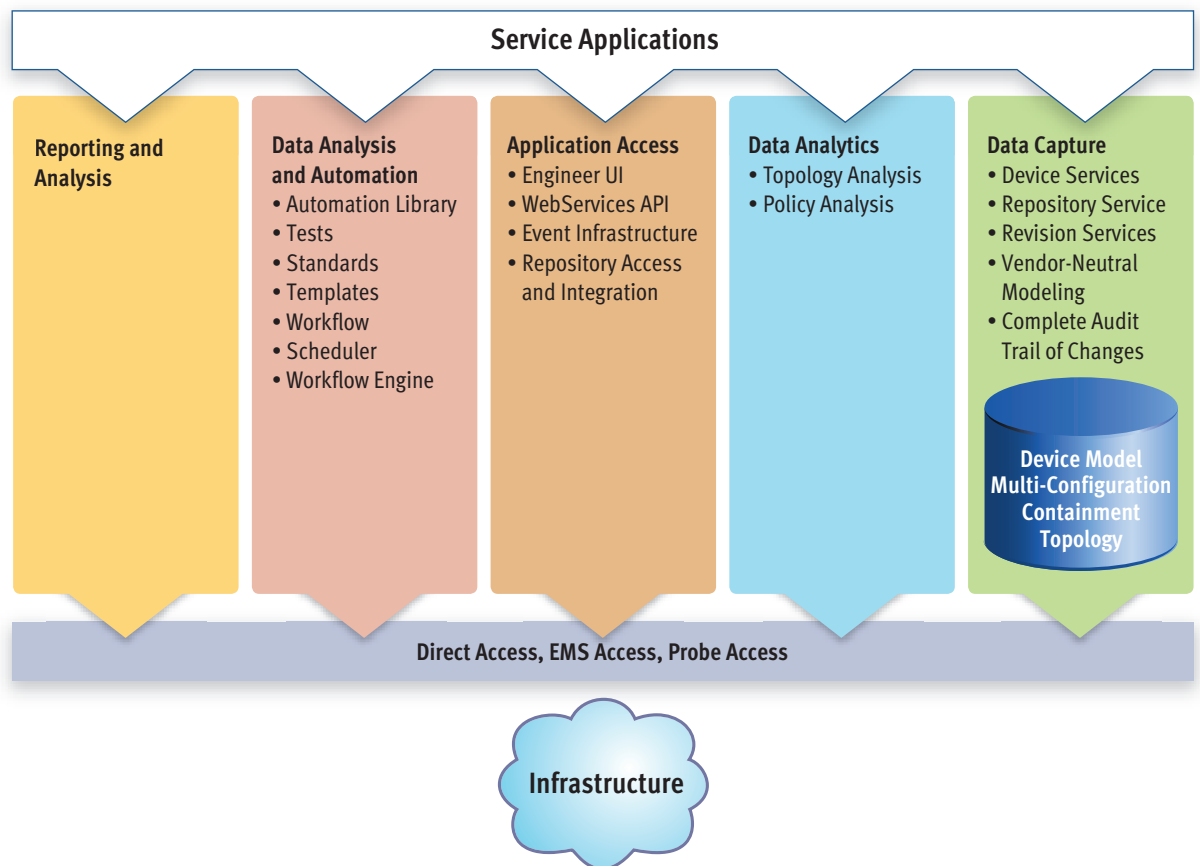
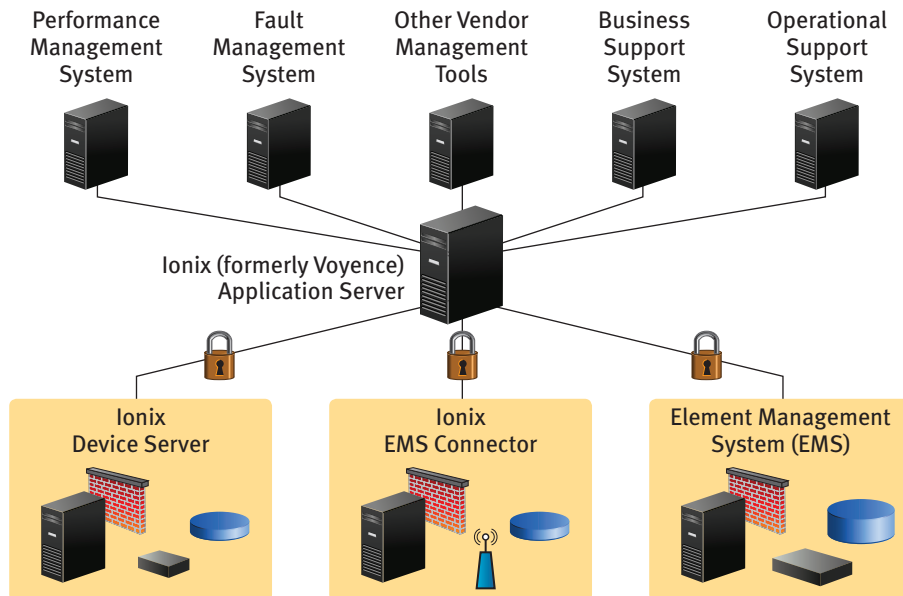


Figure 2. Network Configuration Manager's Hybrid Management Architecture

Figure 3. Network Configuration Manager's Distributed Architecture Delivers Efficiency and Scalability



The Ionix (formerly EMC Voyence®) Application Server can manage one or many device servers, which in turn, can manage thousands of network devices. Device servers can also be element management systems (see Figure 3).

Leverage model-based management to your advantage

Network Configuration Manager's extensible hybrid approach combines the advantages of managing and modeling information in a vendor-neutral manner with detailed text-based configurations of vendor-specific information. This unique method handles IT diversity and reduces IT complexity by making it possible to manage change and configuration of legacy and breakthrough technologies from one system—Network Configuration Manager.

Network Configuration Manager's hybrid approach provides a layer of abstraction—including a common information model, a common user interface, and end-to-end visibility—and handles vendor-neutral, normalized information and vendor-specific information. By doing this with one system, organizations can simplify management, improve efficiency, decrease costs, and increase visibility into disparate parts of the network.

About EMC

EMC Corporation is the world's leading developer and provider of information infrastructure technology and solutions that enable organizations of all sizes to transform the way they compete and create value from their information. Information about EMC's products and services can be found at www.EMC.com.



EMC Corporation
Hopkinton
Massachusetts
01748-9103
1-508-435-1000
In North America 1-866-464-7381
www.EMC.com

Take the next step

To learn more about how EMC Network Configuration Manager and other EMC management solutions can positively impact your business and IT operations, contact your local EMC or EMC resource management sales representative, or visit our website at www.EMC.com.