

EMC Data Center Blueprinting Service

The Big Picture

Accuracy

- Tribal knowledge may not always be up to date or reflect recent changes to the application infrastructure

Success

- Depends on a strong foundation of information at the start of any data center project

Reduced Risk

- Avoid the risk of faulty decisions based on unknown dependencies and incomplete documentation

Consistency

- Automated and consistent discovery of CIs and dependencies reduces labor time and increases accuracy

Those who plan data center consolidation, migration, and disaster recovery projects face a daunting task. First, they must accurately and quickly inventory systems, networks, and applications—which is no small undertaking since data centers are in a constant state of change, with increasing complexity, and can be widely distributed. Second, to document application dependencies, they need to determine how data center services relate to the underlying infrastructure—specifically what is installed where, which applications use what devices, and which application services communicate to each other. Finally, they must analyze relative server and application usage and demand so that determinations can be made on the appropriate candidates for virtualization, consolidation, and or migration.

The core challenge is the tremendous time investment required to get this comprehensive information—on average, manual discovery processes used to gather this data can take thousands of man hours. In addition, unacceptable levels of errors or incorrect data will creep into any effort that relies on manual process and tribal knowledge. Furthermore, when the planning process includes imperfect or incomplete data, it becomes impossible to guarantee the availability of the IT services after the completion of the project. Since data center consolidation, migration, disaster recovery, and virtualization projects can be inherently risky, it is critical that all risks are minimized or eliminated whenever possible.

Gain peace of mind through automation

Harnessing an automated blueprinting solution delivers peace of mind with:

- Accurate and critical information for determining move groups and analyzing the impact of relocating or consolidating critical business applications.
- Actionable reports that detail the actual business applications, underlying application infrastructure, and business application interdependencies supporting critical business services

With accurate and actionable information, data center projects can be completed with minimal risk and the reduction or elimination of unpleasant surprises.

Leveraging the strength of the technology in EMC® Smarts® Application Discovery Manager, the EMC Data Center Blueprinting service delivers the automation required to:

- Obtain the necessary trusted information
- Eliminate error-prone and time-consuming manual processes
- Reduce costs and risks
- Demonstrate rapid ROI
- Plan with confidence, with the knowledge of accurate information to ensure IT service availability the moment the projects go live

Addressing the need for critical data

With EMC Data Center Blueprints, you will receive actionable information and reports loaded with invaluable data detailing key assets, usage, and dependencies related to key servers and IT services in the information infrastructure. Equally important, because the Data Center Blueprinting service leverages fully automated passive and active discovery technology, you know the information gathered is correct and error-free. Armed with this essential trusted information, the impact of changes can be easily analyzed—for example, relocating critical business applications as well as determining optimal candidates for relocation or consolidation.

The core solution—which can be customized to your particular needs—includes:

- Inventory reports
 - Host Inventory report
 - Service (Application) Inventory report
- Analytical reports
 - Most-Used & Least-Used Hosts reports
 - Most-Used & Least-Used Services (Applications) reports
 - Most-Used & Least-Used Connections reports
- Dependency reports
 - Business Application Dependency Report (up to 10 reports)
- Configuration reports
 - Host Configuration Breakdown report (critical business application target list)
 - Business Application CI Information report (critical business application target list)
 - Searchable Database of all data discovered during the blueprinting process

The engagement typically takes five weeks and is packaged on a per-data-center basis.

The Data Center Blueprinting timeline is as follows:

- 1 week of passive discovery
- 1 week of active discovery
- 1 week of interviews to construct and validate business applications
- 2 weeks of group building, reporting, and DB creation

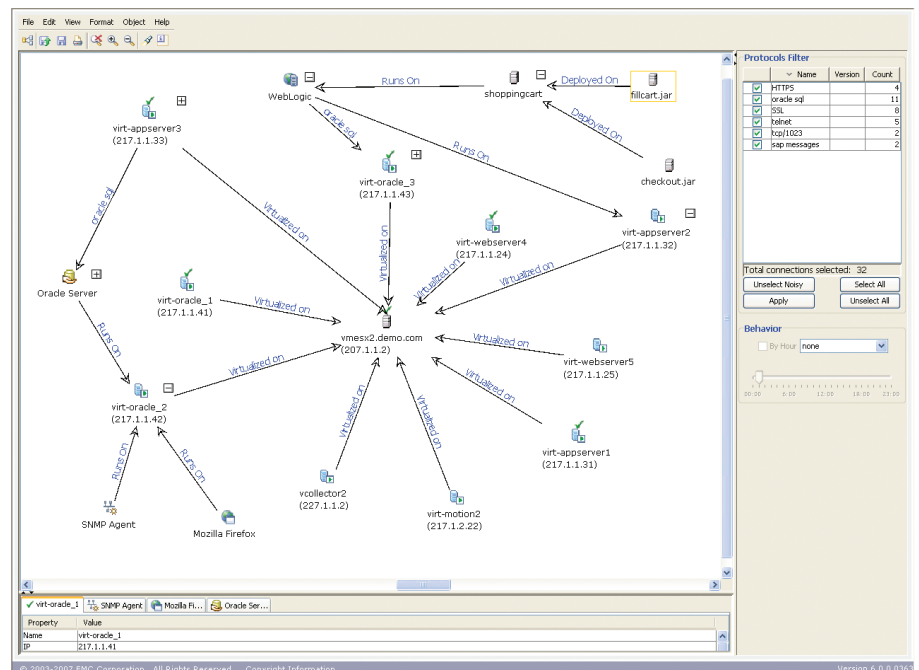


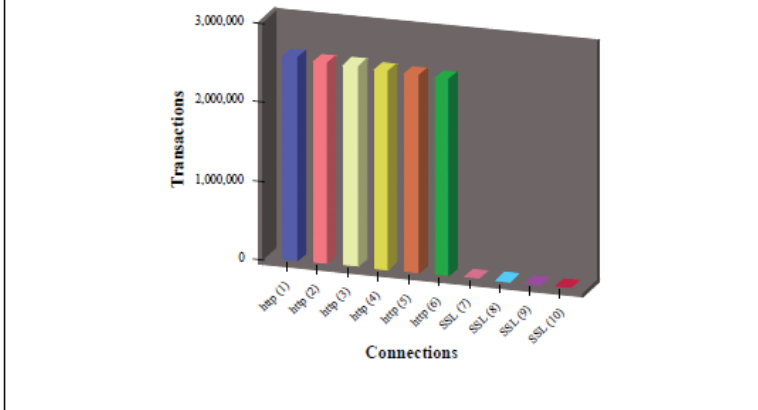
Figure 1: Dependency Map

Input Parameters

Group Name	No Filter
Group Type	No Filter
Max Results	10
Connection	
From Date	05/11/2008 08:41
To Date	03/06/2009 12:50

Most Used Connections

Mar 6, 2009



Rank	Connection	Source	Source Port	Destination	Destination Port	Peak Transactions	Total Transactions
1	http	217.1.1.21 (virt-websrvr1)	80	217.1.1.33 (virt-appsvr3)	3336	114,240	2,566,320
2	http	151.1.1.102 (client2.customer.com)	DYNAMIC	217.1.1.21 (virt-websrvr1)	80	99,900	2,536,920
3	http	151.1.1.103 (client3.customer.com)	DYNAMIC	217.1.1.21 (virt-websrvr1)	80	107,520	2,529,120
4	http	217.1.1.21 (virt-websrvr1)	80	217.1.1.32 (virt-appsvr2)	3336	101,640	2,510,340
5	http	217.1.1.21 (virt-websrvr1)	80	217.1.1.31 (virt-appsvr1)	3336	106,200	2,495,940

Figure 2: Most-Used Connections Report

Significant cost savings and rapid ROI

The Data Center Blueprinting service provides significant ROI to our customers by employing state-of-the-art automation technology that eliminates error-prone and time-consuming manual discovery processes. Based on industry and analyst estimates, a manual solution would require more than 4,200 hours of labor.

	Reports	Manual Process	Advanced DC Blueprinting	Time Savings
Passive Discovery	Host Inventory	200		
	Service Inventory	1,500		
	Analytics	Not possible		
Total		1,700	40	1,660
Interviews and Reports	Dependency Reports	1,200	120	
	Total	1,200	120	1,080
Active Discovery	Configuration Reports	800	40	
	Total	800	40	760
Total Time Saved				3,500 Hours

Proven methodologies

EMC service engagements are guided by the EMC Global Delivery Model, a proven methodology and project framework that ensures fast, effective delivery of implementation services to our global customers. The extensive training that the EMC delivery team undergoes prior to a client engagement establishes a strong foundation for execution.

EMC Global Service professionals are prepared to deliver a Data Center Blueprint that provides significant impact to your business. Our technical consultants and architects have the expertise, training, and certification to help you realize a successful project.

EMC Data Center Blueprinting engagement

EMC Global Services will work closely with your staff throughout the engagement to assure clear communication, updates on progress, and confirmation regarding the finalization of the project. Leveraging our Global Delivery Model ensures that the service delivered meets your expectations. Here is what you can expect with your Data Center Blueprinting service.

Deployment planning

EMC meets with you to conduct an implementation review meeting, including a review of the project scope, limitations, and verification that your environment is ready for the EMC Smarts Application Discovery Manager implementation at the core of the service. EMC works with you to develop a mutually agreed-upon timeline for the engagement. Once you have reviewed and approved the project timeline and deliverables, EMC schedules the resources to deliver the Data Center Blueprinting service.

Deployment and testing

EMC will deploy the appropriate technology and applications and configure them to discover the agreed-upon number of servers in the environment. Once the technology is fully implemented, EMC will begin the Data Center Blueprinting discovery.

Documentation, project overview, and acceptance

After the engagement is complete, EMC Global Service professionals conduct a formal review of the captured information, including sign-off, ensuring the engagement meets your needs. EMC generates and provides a full set of reports described earlier to enable accurate and timely decision-making for your data center projects.

Look to EMC Global Services to deliver results

EMC Global Services provides the strategic guidance and technology expertise organizations need to address their business and information infrastructure challenges and derive the maximum value from their information assets and investments. We are committed to exceptional total customer experience through service excellence. Our more than 13,000 professional service and support experts worldwide, plus a global network of alliances and partners, leverage proven methodologies, industry best practices, experience, and knowledge derived from EMC's 30-year information-centric heritage to address the full spectrum of customer needs across the information lifecycle: strategize, advise, architect, implement, manage, and support.



EMC Corporation
Hopkinton
Massachusetts
01748-9103
1-508-435-1000
In North America 1-866-464-7381
www.EMC.com

Take the next step

To learn more about the full spectrum of services from EMC, contact your local EMC representative or authorized value-added reseller, call us at 1-866-464-7381, or visit our website at www.EMC.com.